



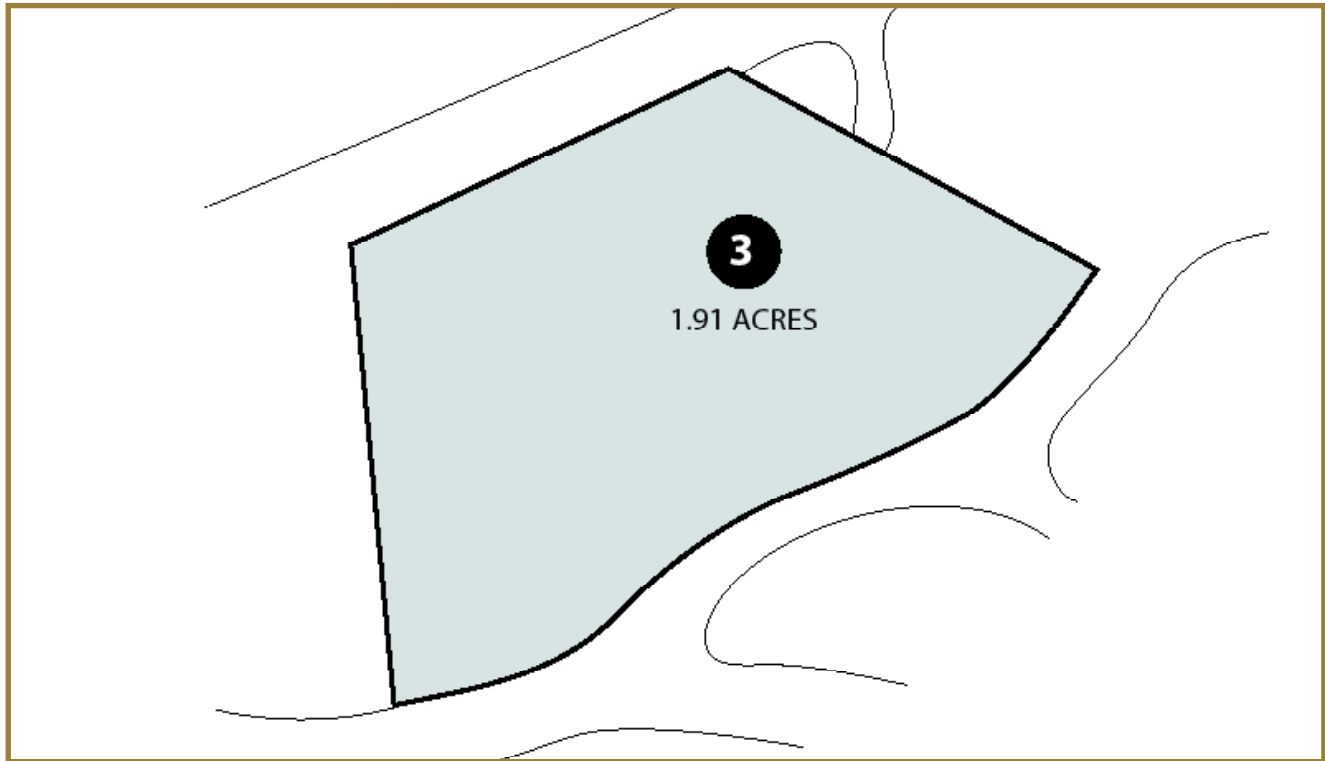
# DISTINCTIVE BUILDING & DESIGN

*Lot #3*

AT THE ESTATES OF  
LAUREL RIDGE COUNTRY CLUB

1.91 ACRES

PRICED: \$159,000.00



For More Information Contact:  
Distinctive Building & Design  
1482 Russ Avenue,  
Waynesville, NC 28786  
Telephone : 828-456-4730  
or [info@distinctivecustomhomes.com](mailto:info@distinctivecustomhomes.com)

#### LAND FEATURES:

City Water; underground power, cable tv  
and phone; city trash pickup (weekly,  
included in taxes); street lights.

